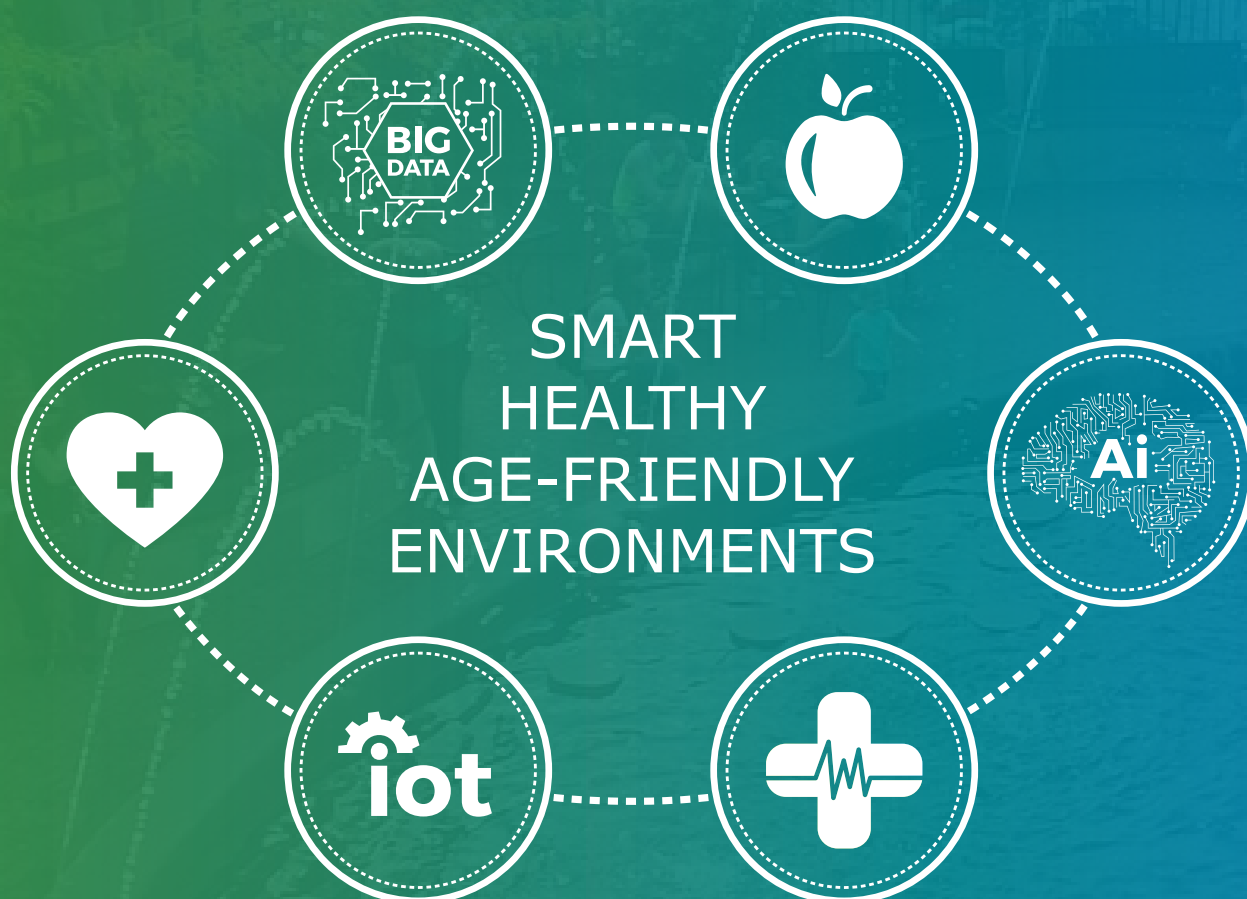


JOINT STATEMENT SUMMARY

THEMATIC NETWORK 2018

The Thematic Network on Smart Healthy Age-Friendly Environments (SHAFE) was coordinated by Cáritas Coimbra and AFEdemy, in partnership with its main and associated partners. All information on SHAFE may be consulted in: caritascoimbra.pt/en/shafe

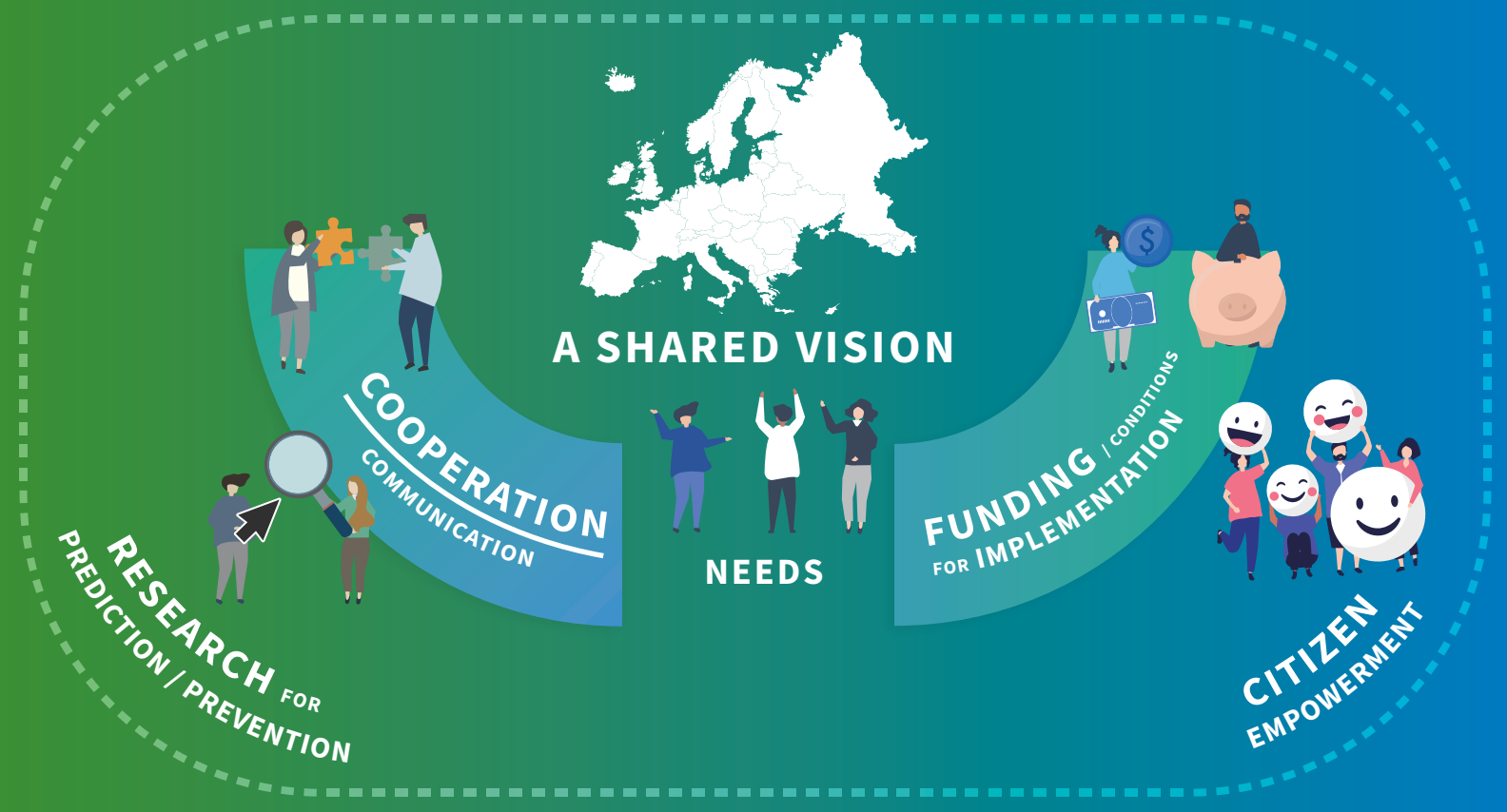
The specific aim of SHAFE in 2018 was to deliver a Joint Statement with recommendations to enhance the 2 main aspects of Age-Friendly Environments – Places and People – in the creation of eHealth and mHealth solutions – especially focused on quality and costs.



CALL TO ACTION TO CREATE AND UPSCALE SMART HEALTHY AGE-FRIENDLY ENVIRONMENTS ACROSS EUROPE

We call upon the European Commission, the European Parliament and EU Member States, Local and Regional Authorities to recognise the central role that Smart Healthy Age-Friendly Environments play to foster independent living and well-being for all European citizens urging them to accelerate large-scale implementation.

This means:



CALL 01

CREATE A SHARED EUROPEAN VISION ON SMART HEALTHY AGE-FRIENDLY ENVIRONMENTS

Our first recommendation is to develop a shared European vision on Smart Healthy Age-Friendly Environments (SHAFE) that may be used as an inspiring sketch to be used at local and regional level everywhere in Europe.

We urge the European Commission and Member States to cooperate with the partners of SHAFE, the Steering Group and Local and Regional Authorities to create the conditions to have this high-level agreement among relevant actors in Europe, recognizing that Smart Healthy Age-Friendly Environments can benefit the whole society and involve international agencies, public authorities, as well as civil society and NGOs.

CALL 02

PROMOTE CROSS-SECTORAL COOPERATION

To achieve a better integrative collaboration, we recommend the creation of national and international interdisciplinary policy and societal working groups or ecosystems at all levels that are responsible for developing joint policies of the implementation of Smart Healthy Age-Friendly Environments. The European common vision can be an inspiration.

Secondly, equal and easy access to information and knowledge is crucial to build-up equal starting-points for every stakeholder and thus to further foster successful cross-sectoral cooperation.

To achieve further cross-sectoral cooperation, EU policy shall be aligned with Member States on integration of public welfare with health and social care system and also with private providers.

FUND THE IMPLEMENTATION OF SMART HEALTHY AGE-FRIENDLY ENVIRONMENTS

CALL 03

The partners recognize the need for a big push to implementation. This can be achieved by fostering positive discrimination in budget and public funding to organisations that work on Smart Healthy Age-Friendly Environments. A shift to funding of upscaling of already existing, well performing examples would better enhance the roll out across Europe.

It is very important that European and national funding schemes are aligned, so that innovation coming from successful European projects can be integrated in national frameworks and scaled-up through Europe. New ways of implementing this specific "dialogue" between different funding programmes must be a priority.

Also, very important is to create funding frameworks that integrate different elements on SHAFE, such as health, social care, ICT and built environments in the same mission and calls, allowing effective implementation of long-term sustainable solutions.

Besides funding, also public procurement is an essential element to give a boost to large-scale implementation.

INVEST IN RESEARCH THAT DERIVES FROM SOCIETAL NEEDS AND CHALLENGES AND USE KNOWLEDGE TO PREDICTION AND PREVENTION

CALL 04

The better way to guarantee sustainability is to invest in prevention through the life course and predict the upcoming challenges and changes with enough time to address them with the minimum resources.

To achieve more impacts regarding societal needs and challenges, we recommend increasing the demand on the social and economic impact of projects which may constitute an opportunity and area of future investment for researchers.

Research is essential to predict and prevent what may be the biggest challenges of societies in the years to come.

GUARANTEE THE EMPOWERMENT OF CITIZENS AND THE PROMOTION OF PEOPLE-CENTRED POLICIES AND MEASURES

CALL 05

Sustainable development needs to start earlier: having a lifelong approach implies that it starts even before birth. Citizens need to be involved from the start of each development that concerns their living environments and their health and care.

Moving from treating diseases to prevention and well-being is critical. Mind-sets need to change, and education is the key. Promotion of healthy lifestyles and well-being makes people autonomous through education.

It is also necessary that citizens get the opportunity to initiate improvements in their living environments themselves. This does not intend to pass the responsibility for the citizens but instead to promote a culture of shared responsibility between authorities and citizens – all working together towards common good.



**WE EXPECT YOU TO
PARTICIPATE**



+ ACTIVE CITIZENSHIP



+ HEALTH LITERACY



+ ADAPTED ENVIRONMENTS



+ PHYSICAL EXERCISE

CITIZEN EMPOWERMENT

COORDINATORS



MAIN PARTNERS



ASSOCIATED PARTNERS



Thematic Network 2018 on Smart Healthy Age-Friendly Environments, Carina Dantas, Willeke van Staaldin, Ana Luísa Jegundo, Javier Ganzarain, Joint Statement on Smart Healthy Age-Friendly Environments, Coimbra and Gouda, 2018

Main contacts: Carina Dantas (carinadantas@caritascoimbra.pt) | Willeke van Staaldin (willeke@afedemy.eu)