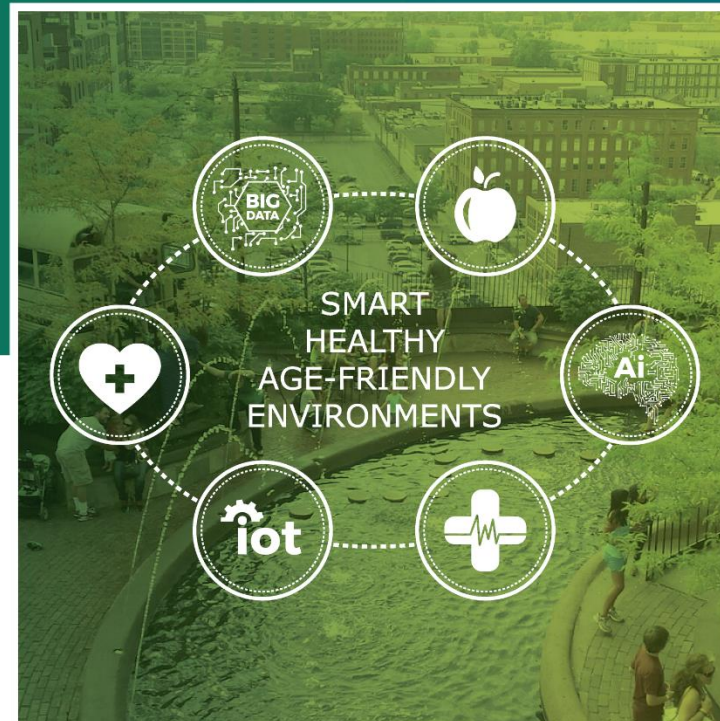


THEMATIC NETWORK 2018

SMART HEALTHY AGE-FRIENDLY ENVIRONMENTS



Carina Dantas

carinadantas@caritascoimbra.pt

Ana Jegundo

analuisajegundo@caritascoimbra.pt

Willeke van Staalduinen

willeke@afedemy.eu

Javier Ganzarain

javier@afedemy.eu

SECOND WEBINAR

METHODOLOGY

WORKING PAPER


Background
The art of eHealth and
Quality and Costs, people
with diseases/impairments
Stakeholders opinions
Best practices
Common principles

JOINT STATEMENT

Common position on Smart
Healthy Age Friendly
Environments

Recommendations EU policy
making beyond 2020

CALL TO ACTION

An elderly man with glasses and a young boy are looking at a tablet together. The man is on the left, wearing a blue and white checkered shirt. The boy is on the right, wearing a light blue shirt. They are both looking down at the tablet, which is held by the man. The background is blurred, showing an indoor setting.

The Framing Paper is already circulating for comments:

<https://www.caritascoimbra.pt/en/2018/sem-categoria/comment-on-shafes-framing-paper/>

It includes 5 areas of Recommendations to be discussed.

After the online consultation and the AAL Forum workshop, all inputs will be collected to the first draft of the Joint Statement.

This document will be sent for comments to all members and then revised towards the final version by the TN Coordination team - 25th October.

MAIN AREAS for the
JOINT STATEMENT

Got inspiration from
the classics



A COMMON VISION



CROSS-SECTORAL COOPERATION



**FUND THE
IMPLEMENTATION**



**RESEARCH FOCUSED
ON ACTUAL SOCIETAL
NEEDS**



**EMPOWER CITIZENS
AND DESIGN PEOPLE-
CENTERED
INTERVENTIONS**





MAIN AREAS for the JOINT STATEMENT

Create a shared European Vision on Smart Healthy Age-Friendly Environments

First step to realise smart healthy age-friendly environments is to develop a shared European vision.

This shall be a high-level agreement of relevant actors in Europe, such as the main and associated partners of the Thematic Network SHAFE in addition to the European Commission.

This strategy will foster local and regional stakeholders as an inspiring sketch or blueprint to be used at local and regional level everywhere in Europe.

Detailed actions on all of these levels (European, national, regional/local) shall be detailed for the Joint Statement.



MAIN AREAS for the JOINT STATEMENT

Ensure cross-sectoral cooperation

Crucial for the development of smart healthy age-friendly environments are the alignment of (policy) domains and an integrative approach.

Politicians, policy makers and other important societal players need to abandon thinking and working in pillars and open up for cross-sectoral cooperation, including public services and social care, construction and ICT, urban planning and healthcare, housing and mobility.

To achieve a better integrative collaboration we propose to create national and international interdisciplinary policy and societal working groups or ecosystems at all levels that are responsible for developing joint policies of the implementation of smart healthy age-friendly environments. The European common vision can be an inspiration.

Again, detailed actions on all of these levels (European, national, regional/local) will be detailed for the Joint Statement.

MAIN AREAS for the JOINT STATEMENT

Fund the implementation of Smart Healthy Age Friendly Environments

Budgets for research and innovation often go to developing new proof of concepts and to install new pilots.

A shift to funding of implementation and upscaling of already existing, well performing examples of smart healthy age-friendly environments and independent living would better enhance the roll out across Europe.

It is very important that European funding and national funding schemes are aligned, so that innovation coming from successful European projects can be integrated in national frameworks and therefore scale-up through Europe.

Also, very important is to create funding frameworks that integrate different elements on SHAFE, like Health, Social care, ICT and building environments in the same calls, allowing effective implementation of long-term solutions.

These funding frameworks shall derive from the European vision and EU/Member States task forces on the subject.



MAIN AREAS for the JOINT STATEMENT

Invest in research that derives from societal needs and challenges and use knowledge to prediction and prevention

To achieve more impact regarding societal needs and challenges, we recommend increasing the funding calls that support long and large-scaled pilots and raise the demand on the social and economic impact of projects.

Also we suggest investing more on funding for actions that include the prediction of health and social needs and challenges and are connected to the implementation of prevention measures.

We believe we have already passed the point where our healthcare and social care systems could respond to all upcoming needs forever. The better way to guarantee sustainability is to invest in prevention through the life course and predict the upcoming challenges with enough time to address them with the minimum resources.

Research is essential to guarantee this and needs to be encouraged to privilege this approach.

MAIN AREAS for the JOINT STATEMENT

Guarantee the empowerment of citizens and the promotion of people-centred policies and measures

Elementary in the development of SHAFE across Europe is the involvement of European citizens.

Citizens need to be involved from the start of each development that is concerning their living environments and their health and care. Participatory approach methods will have to be intrinsic parts of academic curricula and new professional profiles that link areas of knowledge with management and communication skills should be developed.

It is also necessary that citizens get the opportunity to initiate improvements in their living environments themselves.

To enable and empower citizens more lifelong learning possibilities are needed and higher participatory budgets are recommended. More education activities on aspects such as digital literacy, health literacy, and political / societal mobilisation are also of extreme importance to guarantee full and conscious engagement.



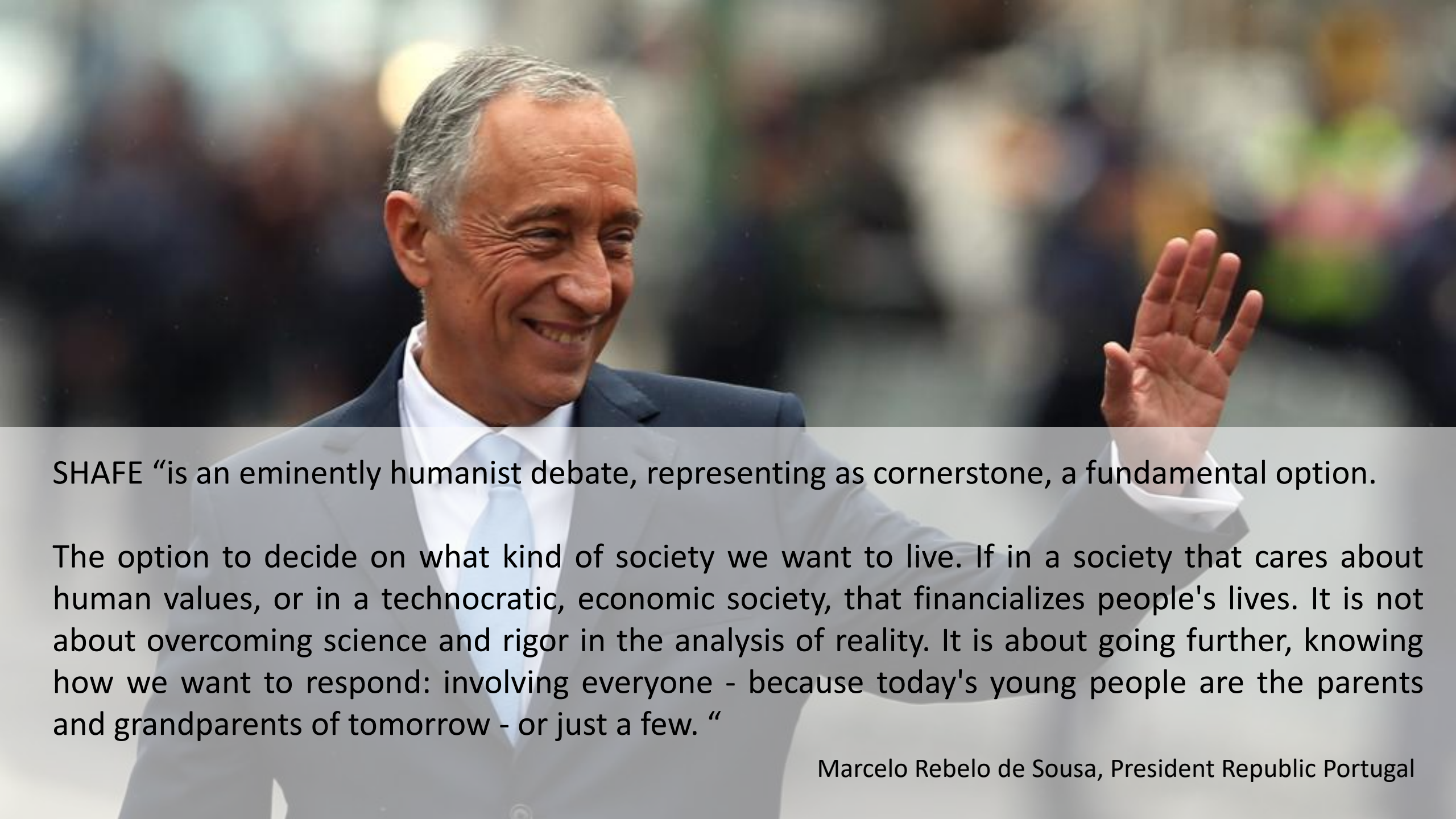
JOINT STATEMENT PRESENTED

12 NOVEMBER | HPP ANNUAL MEETING | BRUSSELS

AND LIFE AFTER JOINT STATEMENT? CALL TO ACTION!!

TOWARDS A WHITE PAPER ON SHAFE

Discuss it with us at **ICT 2018 | VIENNA | 5 DECEMBER**



SHAFE “is an eminently humanist debate, representing as cornerstone, a fundamental option.

The option to decide on what kind of society we want to live. If in a society that cares about human values, or in a technocratic, economic society, that financializes people's lives. It is not about overcoming science and rigor in the analysis of reality. It is about going further, knowing how we want to respond: involving everyone - because today's young people are the parents and grandparents of tomorrow - or just a few. “

Marcelo Rebelo de Sousa, President Republic Portugal