

THEMATIC NETWORK 2018

SMART HEALTHY AGE-FRIENDLY ENVIRONMENTS



CONTEXT

If people should age at their own homes, how to align **technological** development with the **building** industry for smart environments in terms of **POLICY** and **FUNDING**, enhancing a **more efficient health care system** that may add **better quality** for less investment?

Breaking silos

Scaling up



A photograph of a family on a wooden boat. A man with grey hair, wearing a brown sweater and an orange life vest, is smiling and looking down at a young girl. The girl is wearing a blue beanie, a blue denim jacket, and an orange life vest. To the right, a woman with long brown hair, wearing a red long-sleeved shirt and an orange life vest, is partially visible. The background shows a body of water and a dense line of green trees. A semi-transparent grey rectangular box is overlaid on the center of the image, containing the text.

How to enhance **Places** and **People** in the creation of **eHealth** and **mHealth** solutions, with special focus on **quality** and **costs**?

OBJECTIVES

Key is ALIGNMENT

Smart environments affordable and large-scaled in Europe

Aligned
policy and
funding on
building and
technology

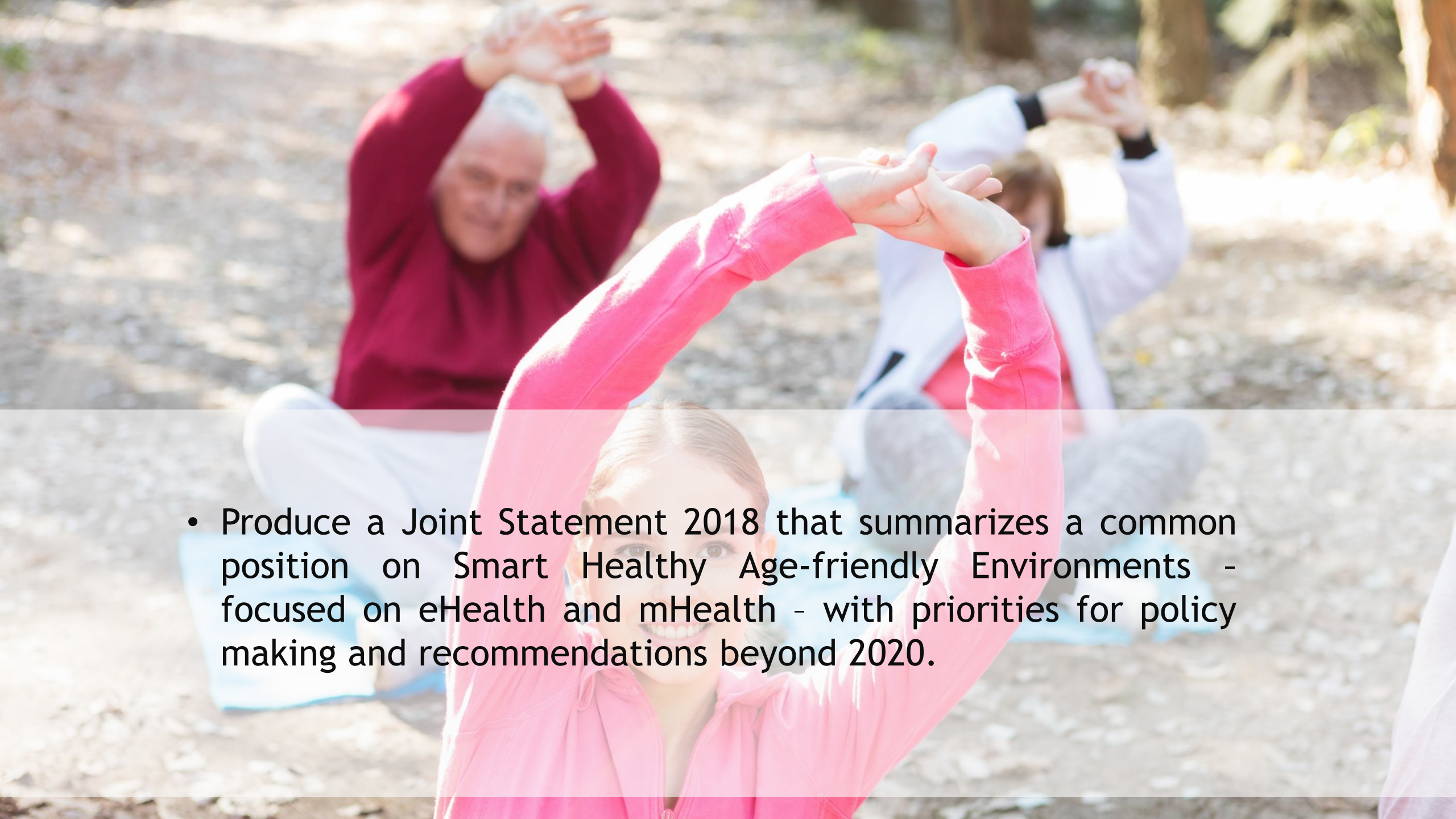
eHealth

- smart homes
e-support like robotics,
smart living environments
and communication
- patients with chronic
diseases / impairments
Involving formal and
informal carers

mHealth

- bridging the gaps
between technology
and user needs and
expectations
- enhance a real
market entrance of
new products

Keystone to a more efficient health care system
that adds **better quality for less investment.**

- 
- Produce a Joint Statement 2018 that summarizes a common position on Smart Healthy Age-friendly Environments - focused on eHealth and mHealth - with priorities for policy making and recommendations beyond 2020.



STAKEHOLDERS NETWORK

www.caritascoimbra.pt/en/shafe

The partnership is developed in a quadruple layer-scheme:

- **Coordinators**
- **Main partners** - The European organisations and networks that supported the Thematic Network [main document](#).
- **Associated partners** - all organisations and networks that cooperate with the coordinators by delivering work, suggestions and comments on the draft Framing Paper and draft Joint Statement.
- **Endorsing partners** - networks or organisations that just endorse the final version of the Joint Statement that is presented to the European Commission in November 2018

Coordinators



Caritas Diocesana de Coimbra is a social non-profit organization that supports people and communities in 5 districts of the Central Region of Portugal.

It has nearly 90 centres (with 150 different services), 1000 workers and 150 volunteers and supports more than 25000 people/year with social, health and education.



AFEdeemy is a limited private company, based in the Netherlands. It's mission is to build capacity of local, regional and national stakeholders (citizens, politicians, policy advisors, healthcare and wellbeing sector, architects, urban planners and businesses) in Europe to enhance the chance on implementing age-friendly environments in their territories.



STAKEHOLDERS NETWORK

MAIN PARTNERS

- European Innovation Partnership on Active and Healthy Ageing (EIP-AHA) - representatives from groups D4 and C2
- European Innovation Partnership Smart Cities and Communities (EIP-SCC)
- European Covenant on Demographic Change
- Eurocities
- Utrecht University (European Framework for Age-Friendly Housing)
- European Centre Social Welfare Policy
- ECHalliance
- European Health Telematics Association (EHTEL)
- Reference Sites Collaborative Network

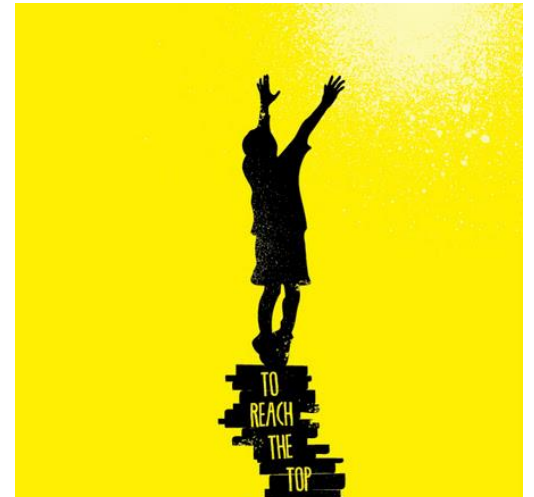
STAKEHOLDERS NETWORK

ONLY DISPLAYED PARTNERS
REGISTERED THROUGH FORM!


ASSOCIATED PARTNERS

Allilengil
Azienda Ospedaliera Universitaria Federico II
BMGI Consulting
Center for Assisted Living Technology Aarhus
De Montfort University
Dublin City University/Age-friendly University Global Network
Dublin Institute Technology
E-Seniors
Empirica
European Chronic Disease Alliance
European Health Futures Forum
European Pain Federation
Gradiant
Hamburg Ministry of Health and Consumer Protection
INNJOY
Institute of Systems and Robotics – Coimbra University
Istituto Rittmeyer
LANUA International Healthcare Consultancy
LILT Biella – Italian League against Cancer

Lithuanian University of Health Sciences
MAGGIOLI S.P.A.
Mativision Ltd.
Medical University of Vienna, Institute for Outcomes Research
Netwell/Casala
NOVUSENS Innovation and Entrepreneurship Institute
Politecnico di Milano
Porto4Ageing
Regione Campania
Sanmedi bv
SingularLogic S.A.
SLOVECO
Smart Homes
The Bartlett Real Estate Institute UCL
UA paal, University of Alicante, dep. Of Computing Technology
Universitat Rovira I Virgili – Smart Health Research Group
University of Deusto
Universidad Politécnica de Madrid, Life Supporting Research Group
Virtualware
Warsaw School of Economics



CAN WE REACH
OVER 200
ENDORSEMENTS?!



AND LIFE AFTER JOIN STATEMENT?

CALL TO ACTION!! GO WIDER...

TOWARDS A WHITE PAPER ON SHAFE

Carina Dantas
CARITAS DIOCESANA DE COIMBRA
carinadantas@caritascoimbra.pt

Willeke van Staalduinen
AFEdemy
willeke@afedemy.eu

