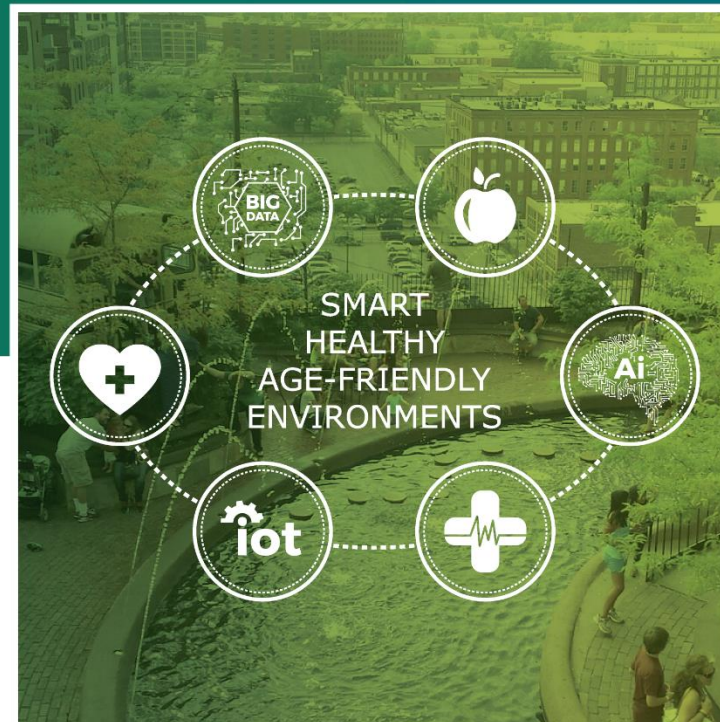


# THEMATIC NETWORK 2018

## SMART HEALTHY AGE-FRIENDLY ENVIRONMENTS

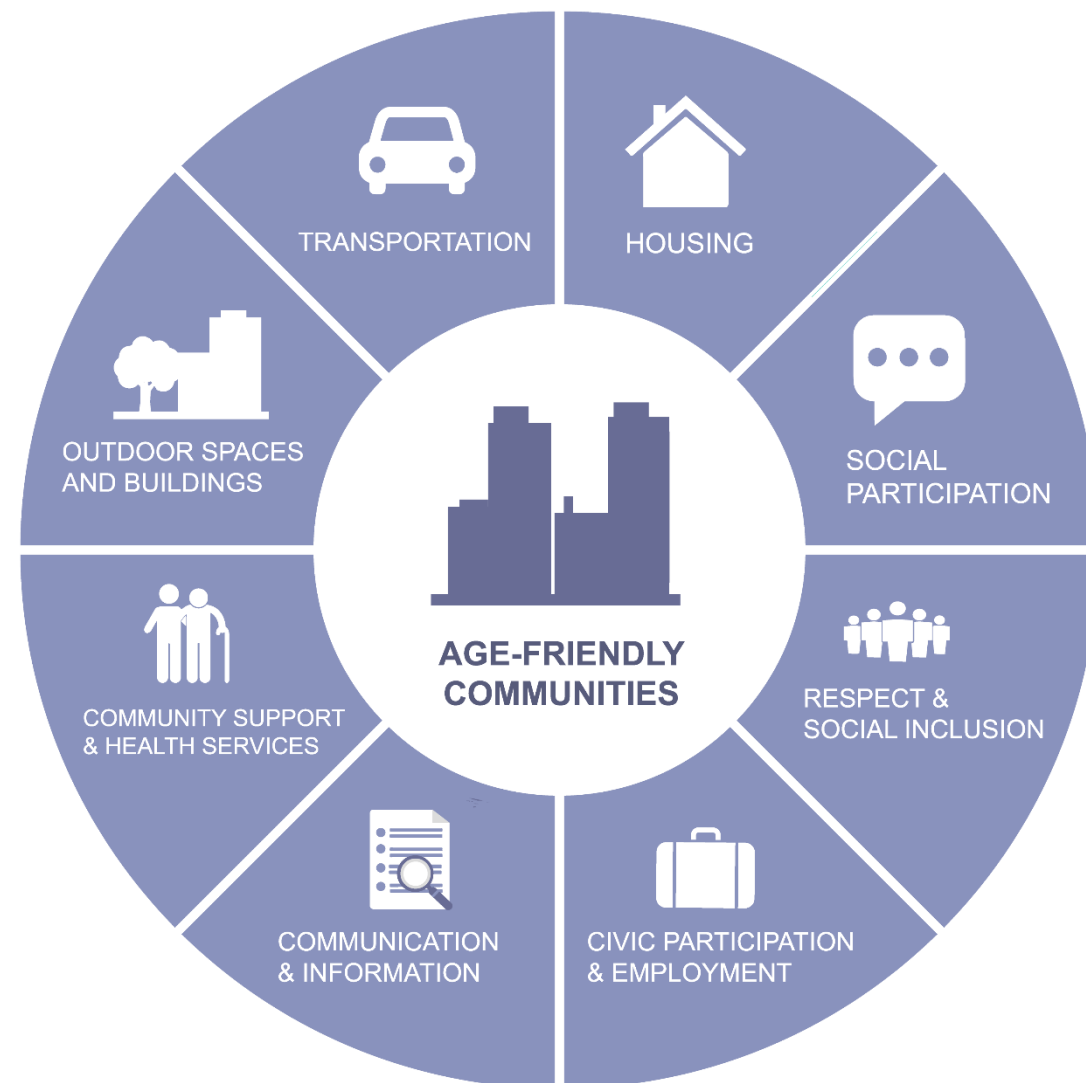


# CONTEXT

How to enhance Places and People in the creation of eHealth and mHealth solutions, with special focus on quality and costs?


Breaking silos

Scaling up





KEEP  
CALM  
AND  
FIND A  
SOLUTION

A photograph of a man and a young girl on a boat. The man, with grey hair, is wearing a grey sweater and an orange life jacket. He is smiling and looking down at the girl. The girl is wearing a blue denim jacket and an orange life jacket. They are both on a wooden boat. In the background, there is a body of water and a dense forest of green trees. The text is overlaid on a semi-transparent grey rectangle in the center of the image.

If people should age at their own homes, how to align **technological** development with the **building** industry for smart environments in terms of **POLICY** and **FUNDING**, enhancing a **more efficient health care system** that may add **better quality for less investment**?



# Key is ALIGNMENT

SHAFE intends to create a high-level policy alignment of different networks and initiatives towards **HEALTH IN AGEING**.

# OBJECTIVES

Smart environments affordable and large-scaled in Europe

## eHealth

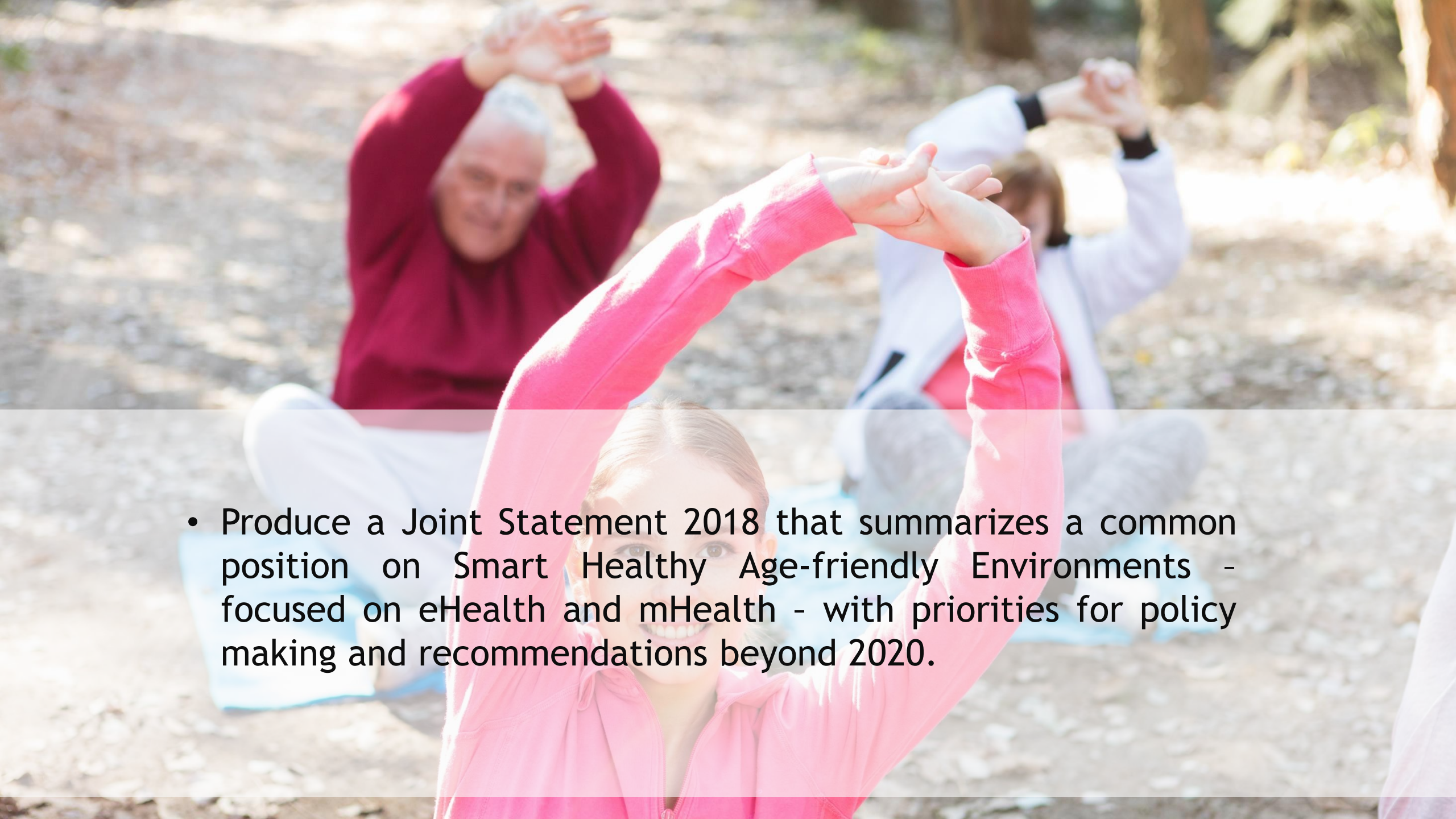
- smart homes e-support like robotics, smart living environments and communication
- patients with chronic diseases / impairments Involving formal and informal carers


Aligned policy and funding on building and technology

## mHealth

- bridging the gaps between technology and user needs and expectations
- enhance a real market entrance of new products

Keystone to a more efficient health care system that adds **better quality for less investment.**

- 
- Produce a Joint Statement 2018 that summarizes a common position on Smart Healthy Age-friendly Environments - focused on eHealth and mHealth - with priorities for policy making and recommendations beyond 2020.

- 
- A photograph of an elderly couple embracing outdoors. The woman, on the left, is wearing a blue long-sleeved shirt and has her arms around the man's shoulders. The man, on the right, is wearing a grey and blue patterned sweater and is smiling broadly. The background is a soft-focus green, suggesting foliage. A semi-transparent grey box is overlaid on the left side of the image, containing a bulleted list.
- **Provide a forum** to exchange policy priorities and technical expertise on AFE and eHealth/mHealth;
  - Inform the Commission/Member States on **knowledge/expertise available** in stakeholder community about challenges, solutions and best practices and perspectives;
  - Bring **better local practices already implemented** by LRA that have been identified in the EIP-AHA for twinning or scaling-up and collect lessons learned towards policy drawing;
  - **Promote common principles** as person-centred interventions, protection of personal data, standardisation, interoperability, data-enabled research, personalised medicine, quadruple helix.

# PROCESS

## PREPARATIONS

Literature  
AAL findings  
FP6, FP7, H2020 findings  
EIP AHA repository  
Experts interviews  
End-users interviews  
Survey

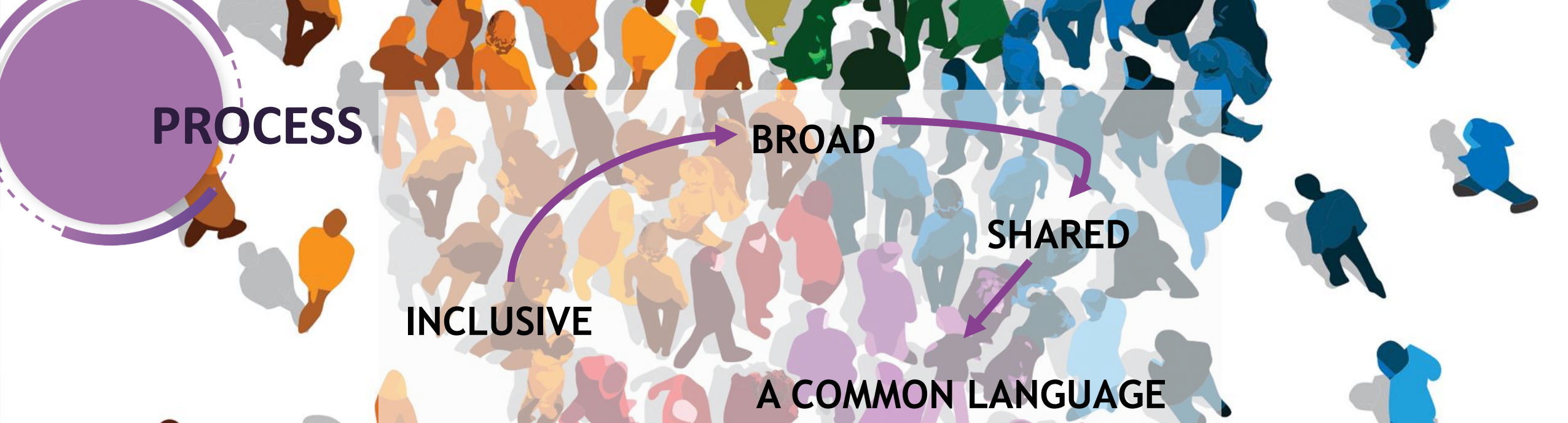
## FRAMING PAPER

Background  
State of the art eHealth and  
mHealth Quality and Costs, people  
with chronic diseases/impairments  
Stakeholders opinions  
Best practices  
Common principles

## JOINT STATEMENT

Common position on Smart  
Healthy Age Friendly  
Environments  
Recommendations EU policy  
making beyond 2020

CALL TO ACTION



- 1 - first draft - ToC
- 2 - literature study on current proven outcomes of eHealth and mHealth
- 3 - personal interviews with leading smart health opinion leaders
- 4 - survey on eHealth and mHealth practices - circulate in several European networks.

A close-up photograph of an elderly man with glasses and a young boy looking at a tablet together. The man is wearing a blue and white checkered shirt, and the boy is wearing a light blue shirt. They are both looking down at the tablet, which is held by the man. The background is blurred, showing an indoor setting with warm lighting.

The first draft of the Joint Statement will be sent for comments to the members of all the partner networks for broader inputs and then revised towards the final version by the TN team.



# STAKEHOLDERS NETWORK


## 5 LAYER PROCESS:

1. TN coordinators and lead partners
2. Contributors from C2/D4 groups EIP-AHA - collaborative work with 29 members
3. Contributors from members of the networks that are partners in the TN - webinar September
4. Broad dissemination in events - Manchester meeting, Digital Assembly 2018, AAL Forum, etc.
5. After November (HPP annual meeting) - open consultation for broader endorsement



# STAKEHOLDERS NETWORK

- European Innovation Partnership on Active and Healthy Ageing (EIP-AHA) - representatives from groups D4 and C2
- European Innovation Partnership Smart Cities and Communities (EIP-SCC)
- European Covenant on Demographic Change
- Eurocities
- European Framework for Age-Friendly Housing (Utrecht University)
- European Centre Social Welfare Policy
- ECHAlliance
- European Health Telematics Association (EHTEL)
- Reference Sites Collaborative Network



AND LIFE AFTER JOIN STATEMENT?

CALL TO ACTION!!

TOWARDS A WHITE PAPER ON SHAFE

Carina Dantas  
CARITAS DIOCESANA DE COIMBRA  
[carinadantas@caritascoimbra.pt](mailto:carinadantas@caritascoimbra.pt)

Willeke van Staalduinen  
AFEdemy  
[willeke@afedemy.eu](mailto:willeke@afedemy.eu)

